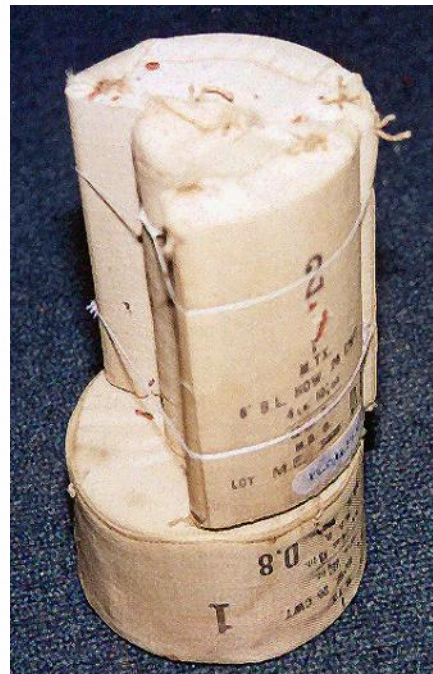
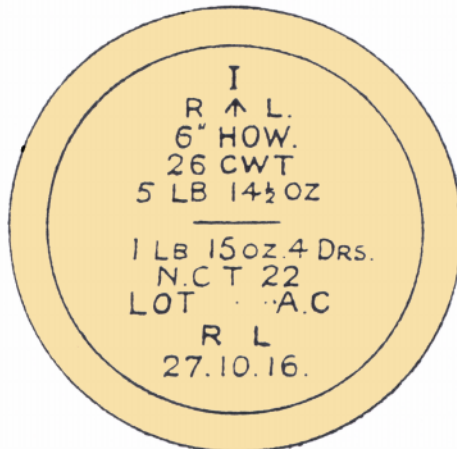
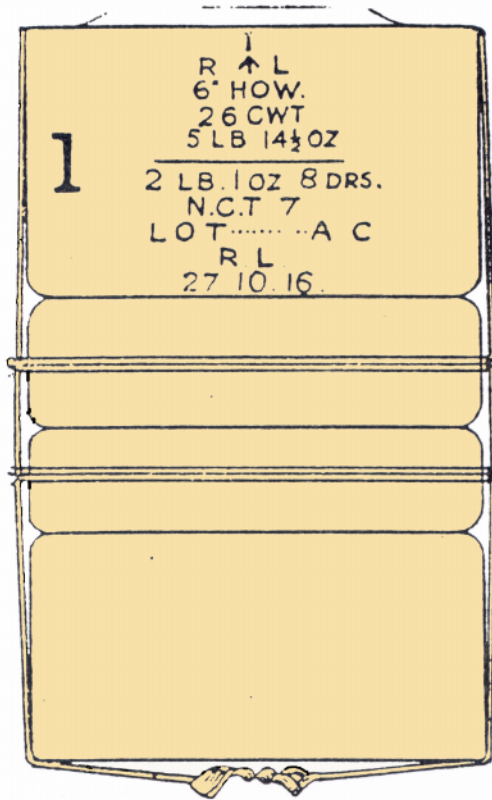


MARKINGS ON ADJUSTABLE PROPELLING CHARGES

The following markings may be found on adjustable propelling charges for howitzers.

I	Numeral of cartridge
R ↑ L	Maker of the empty bag
6" Howitzer 26 CWT	Calibre and weight of howitzer
5 lb 14 ½ oz	Weight of complete cartridge
2 lb 1 oz 8 dr	Weight of a portion the figure 1 being the portion
NCT7	Nature and size of propellant
Lot 000 AC	Lot No of propellant and AC denotes that the charge has been adjusted, when a grouped propellant is used the AC is omitted
RL 27.10.16	Manufacturers initials and date of filling

HOWITZER CARTRIDGES. Typical Markings.



An example of an adjustable charge for a howitzer. Photo courtesy of Australian Logistics Training Centre.

Typical for
2, 3 and 4
portions.