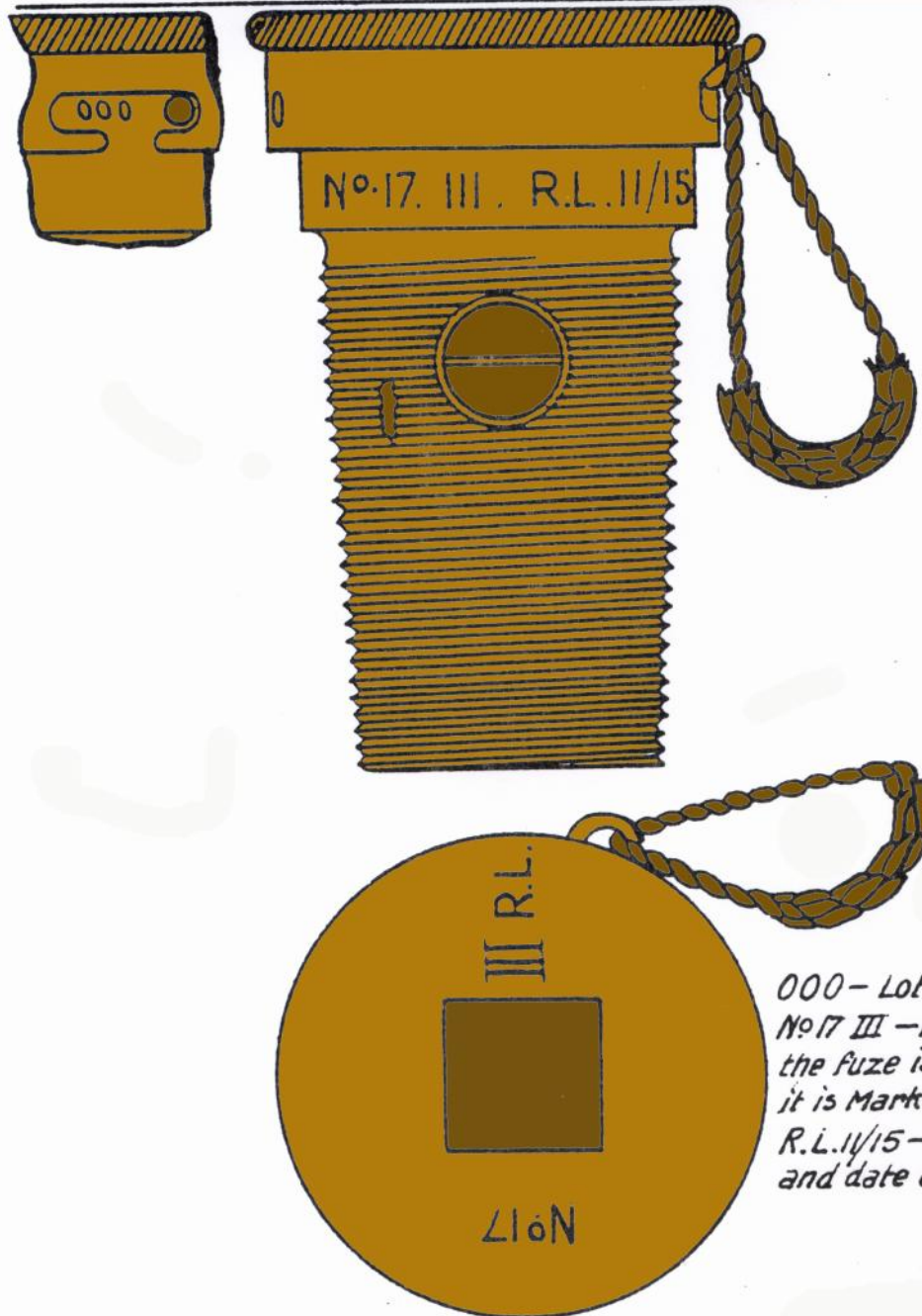


BRITISH 1918 MARKINGS ON FUZES

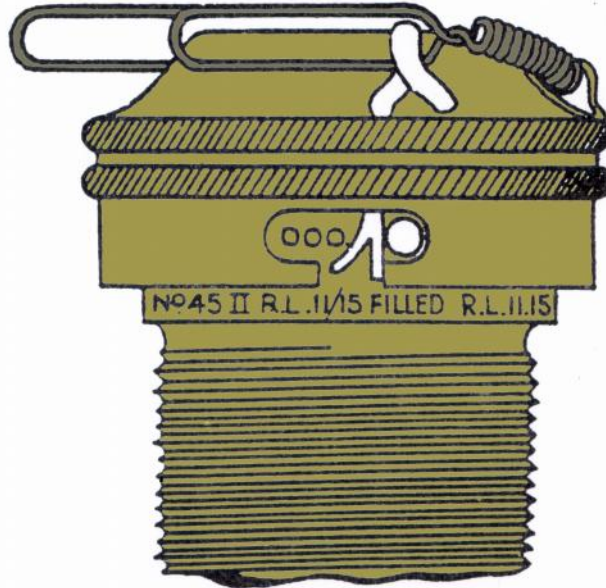
The following markings may be found on British fuzes of the period:

FUZES D.A. TYPICAL MARKINGS FOR 13,17,18,19 AND 19A FUZES.

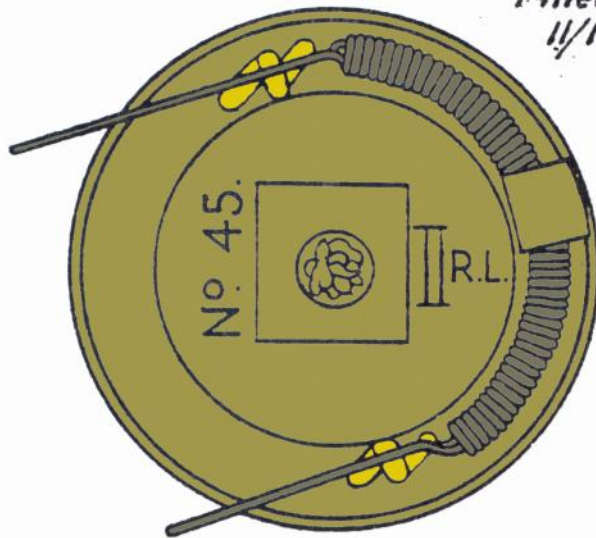


*000 - Lot No. of fuze.
No 17 III - Denotes that
the fuze is No 17 and that
it is Mark III pattern.
R.L. 11/15 - Maker's initials
and date of manufacture.*

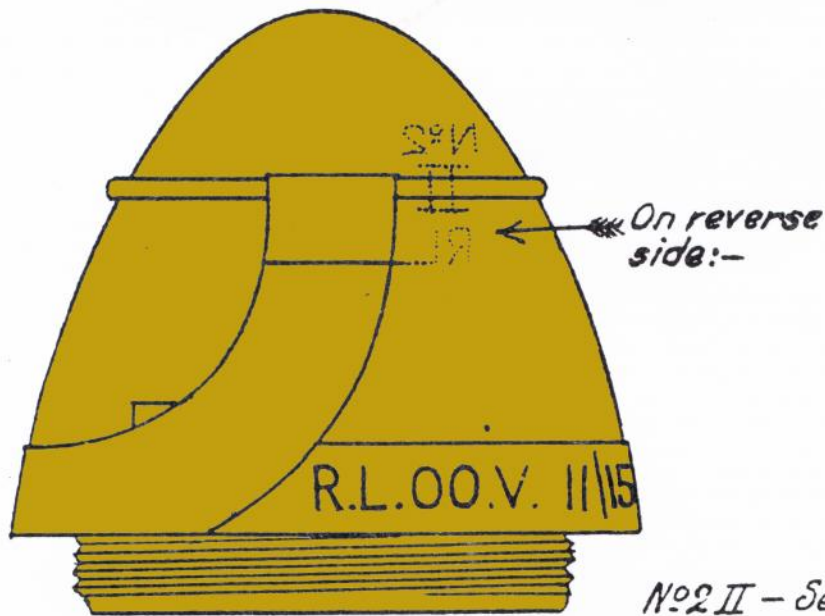
FUZES D.A.
TYPICAL MARKINGS FOR NOS 44 & 45.



*As on Plate XVI and in
addition: —
Filled R.L. Place and date
11/15 of filling.*



T. & P. FUZES WITH COVERS. TYPICAL MARKINGS.



*No 2 II - Serial No and numeral
of fuze cover*

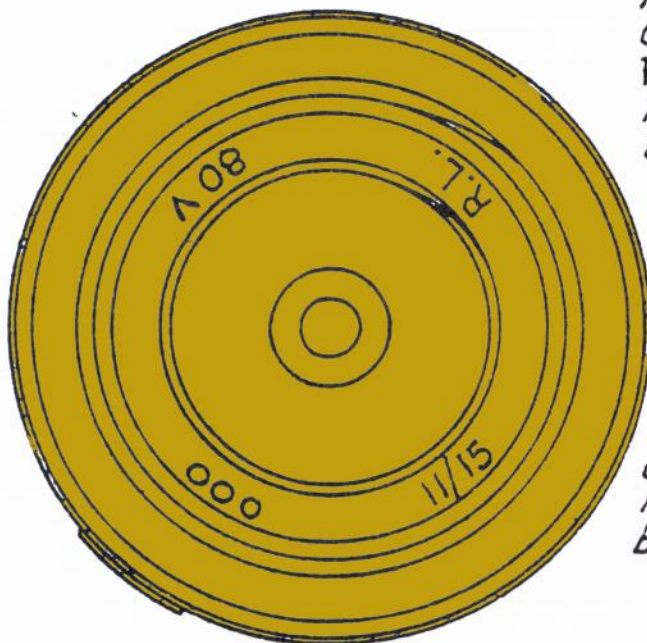
R.L. - Maker's initials.

OO - Lot No of fuze.

V - Mark of fuze.

II/15 - Date of filling.

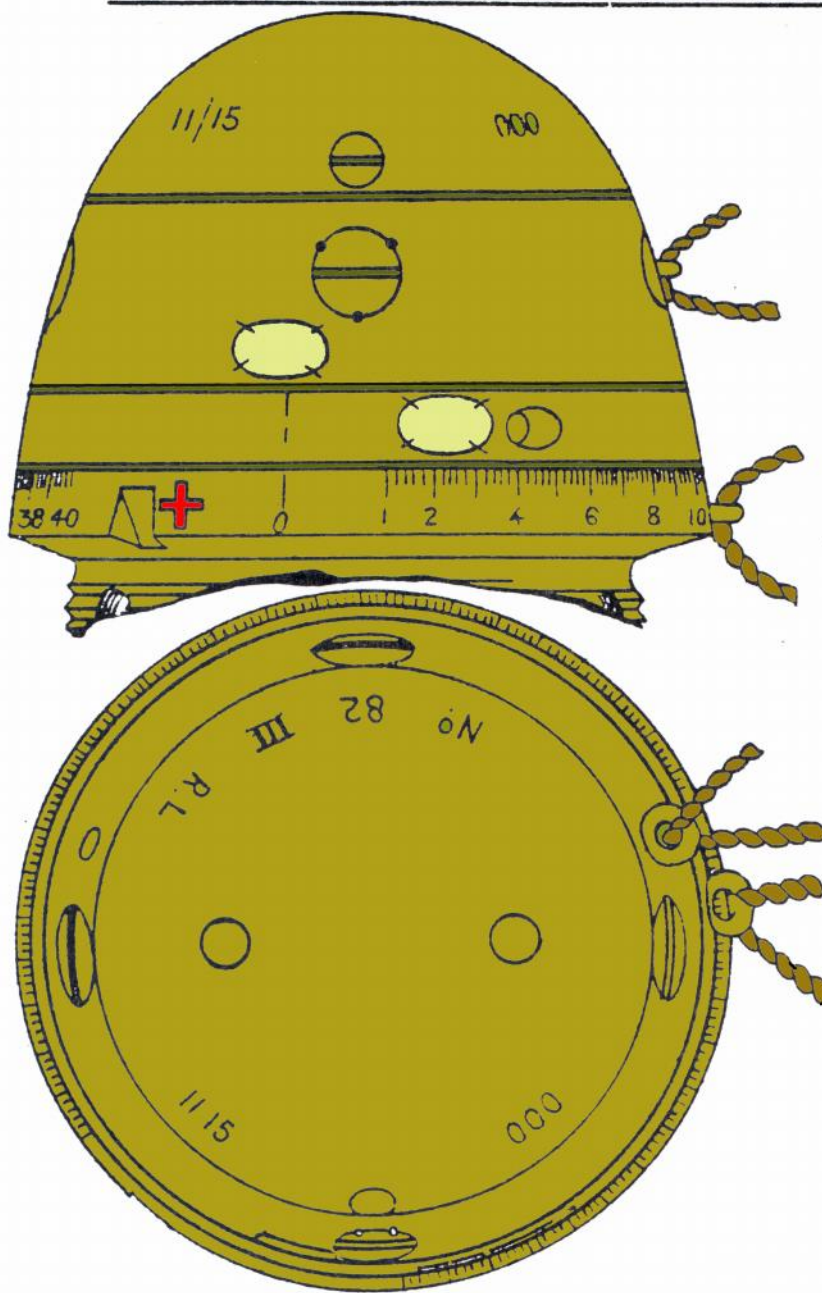
*80 V - Denotes that it is
a No 80 Mark V fuze.*



*Alternatively,
the marking
may be placed
on the base plug,
instead of the
body.*

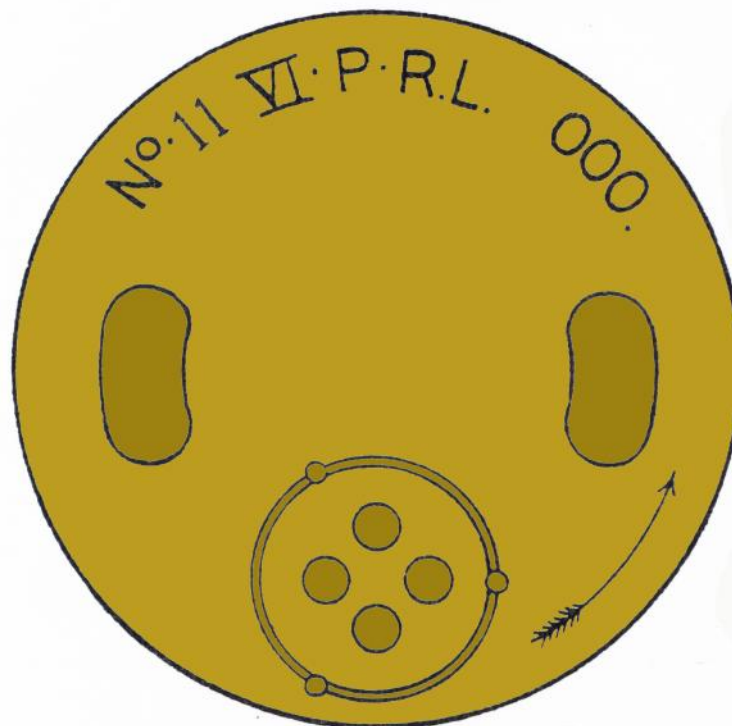
View of Base, Showing Marking

T & P FUZES WITHOUT COVERS.
TYPICAL MARKINGS, ALSO FOR TIME FUZES.



The Markings are the same as for those with cover. In addition :-
 + (Red Cross) 0.
 ↓ (Black Arrow) on time ring denotes "safety" setting. When this cross or arrow and the reading mark are opposite one another the fuze is set at "safe"; and if fired the "time" portion would not act.
 T (in black) - stencilled over the "time" safety pin
 P (in black) - stencilled over the "percussion" safety pin.

BASE FUZES.
TYPICAL MARKING.



View of Base showing Marking.

*No. 11 VI — Denotes a No. 11 base fuze
Mark VI.*

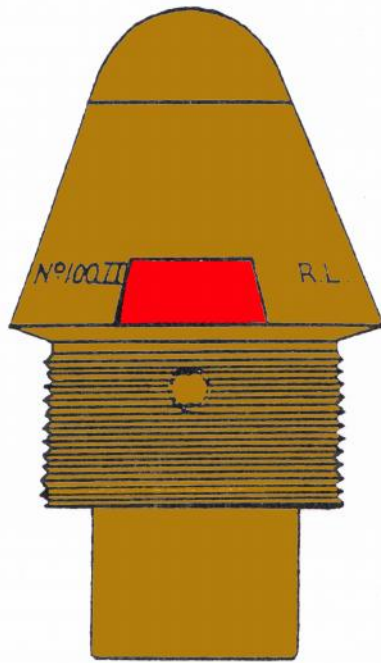
*P. — Denotes that a new pressure
plate has been fitted.*

R.L. — Maker's initials.

000 — Lot No. of fuze.

*Arrow — Indicates the direction in
which the fuze should be turned
for fixing purposes
(left-handed screw thread).*

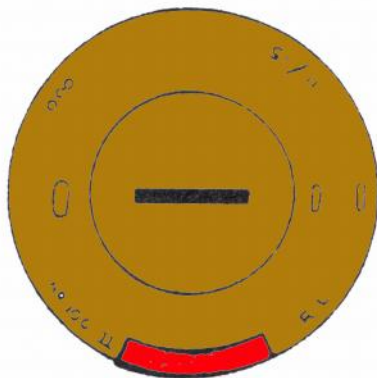
FUZE, GRAZE, NO 100.



As on Plates XVI & XVII and in addition a "Red Patch" to denote the position of the detonator. When fuzing the shell, the grub screw in the nose of the latter must not bear on any part of the red patch.

Blue Cap denotes that the "Gaine" is filled with a delay action.

FOR ADDITIONAL MARKINGS ON FUZES NOS 101 B & C. see Pages. 24 & 25



GAINE N° 2
WITH DELAY & FILLED C.E.



ON REVERSE:-

R.L. 1/1/17

YELLOW
WHEN FILLED P.A.

Blue Band - Denotes "delay."
R.L. 1/1/17 - Monogram of station and date of filling.
Red or yellow } - Denote filling with
Band } - Composition Exploding
or Picric acid pellets
respectively.

THESE BANDS WILL HOWEVER
BE OMITTED IN FUTURE SUPPLIES
W - Denotes that an R.L. Deronator is fitted.