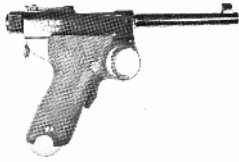
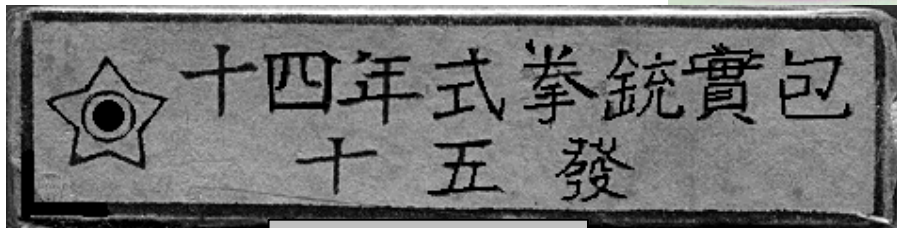
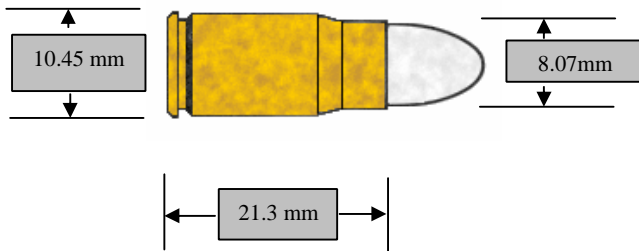


8 mm Nambu



This cartridge was used in the much-despised pistol that was designed by Col. Kijiro Nambu. The pistol was intended to be the sidearm of the enlisted personnel. Introduced around 1907 and put into full time production in 1915 by 1925 it had achieved the status of an official service cartridge. It was used in an extensive range of weapons including an emergency single shot rifle.

None of the cartridges were headstamped or colour coded in any way. Having a grooved projectile and a milled groove around the case identified the drill cartridge.



Packet label from Tokyo Arsenal.

